

ACLS Primer SD Post-Test

1) Identify this rhythm:



- a) Atrial Fibrillation
- b) Atrial Flutter
- c) Ventricular Fibrillation
- d) Ventricular Tachycardia

2) The patient is presenting with the following rhythm and is asymptomatic. Which treatment is indicated?



- a) Atropine
- b) Epinephrine
- c) External Pacing
- d) Observe and Monitor

3) You find a person lying on the ground at a park. What's the FIRST thing you should do?

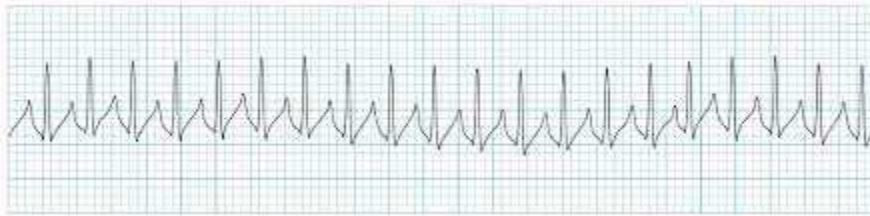
- a) Get help
- b) Check for scene safety
- c) Open the airway
- d) Check pulse

ACLS Primer SD Post-Test

4) What is the recommended respiratory rate per minute during CPR once an advanced airway has been placed?

- a) 6
- b) 8
- c) 10
- d) 12

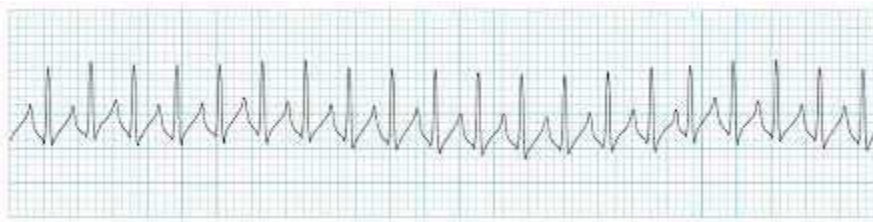
5) The patient presents with the following rhythm. What is the recommended dose of epinephrine?



- a) Stop – Wrong medication!
- b) 0.5 mg IV push
- c) 1.0 mg over 10 minutes
- d) 300 mg

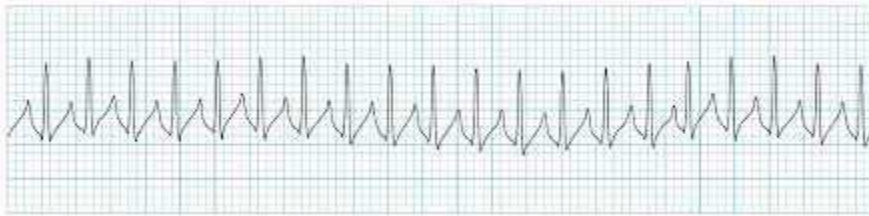
ACLS Primer SD Post-Test

6) Identify this rhythm



- a) V-Tach
- b) SVT
- c) Sinus bradycardia
- d) Sinus tachycardia

7) A patient presenting with this rhythm is having difficulty breathing, chest pain, and a BP of 85/65. What treatment do you recommend?



- a) Unsynchronized defibrillation
- b) 1 mg Epinephrine
- c) 0.5 mg Atropine
- d) Synchronized cardioversion

ACLS Primer SD Post-Test

- 8) What is the compression to ventilation ratio for single rescuer adult CPR?
- a) 5:1
 - b) 15:2
 - c) 30:2
 - d) 30:1
- 9) What is the compression to ventilation ratio for two rescuer adult CPR?
- a) 5:1
 - b) 15:2
 - c) 30:2
 - d) 30:1
- 10) During CPR a physician orders 3 mg of epinephrine be given. You suggest checking the dosage first. This is an example of:
- a) You should never question a doctor
 - b) Constructive Intervention
 - c) Knowledge sharing
 - d) Closed loop communication