

PALS Primer SD Post-Test

- 1) You are walking in a park and find a child lying on the sidewalk. What do you do first?
 - a) Get help
 - b) Check for breathing
 - c) Check for a pulse
 - d) Check for scene safety

- 2) You are performing CPR on a child when a second rescuer arrives. How will CPR change?
 - a) Compression to ventilation ratio will change to 15:2
 - b) You can now do asynchronous chest compressions
 - c) Compression to ventilation ratio will change to 30:2
 - d) Compression to ventilation ratio will change to 5:1

- 3) When performing CPR on a child, what is the first drug to be administered?
 - a) Amiodarone
 - b) Atropine
 - c) Adenosine
 - d) Epinephrine

PALS Primer SD Post-Test

4) At the first rhythm check this is the rhythm. What do you do next?



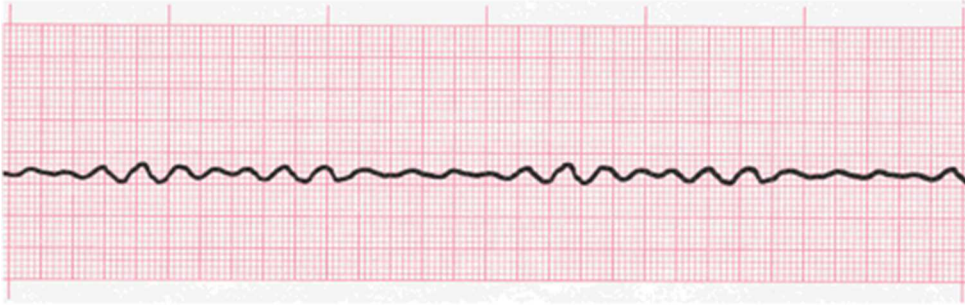
- a) Continue CPR
- b) Targeted temperature management
- c) Defibrillate
- d) Check pulse

5) You are treating a 9-year-old who suddenly becomes bradycardic. What is the most likely cause?

- a) Acute coronary syndrome
- b) Hypoxia
- c) Pneumothorax
- d) Acute shock

PALS Primer SD Post-Test

- 6) You are treating a 13-year-old who suddenly becomes unresponsive. The cardiac monitor displays the following rhythm. What do you do first?



- a) Open the airway
b) Begin CPR
c) Call a code
d) Check for responsiveness
- 7) You find an unresponsive 12-year-old at the park who has a pulse of 52 and is turning blue. No one else is around. What do you do?
- a) Give rescue breaths every 3-5 seconds
b) CPR until help arrives
c) CPR for 2 minutes and then leave to get help
d) Leave to get help immediately
- 8) You are eating at a restaurant when a frantic mother starts shouting for help – her baby is choking. What do you do?
- a) Call 911
b) Administer 5 back blows and 5 chest thrusts to the baby
c) Perform a blind finger sweep before any back slaps
d) Put the baby on the floor and start CPR

PALS Primer SD Post-Test

9) What is the maximum defibrillation dose for a child?

- a) 100 Joules
- b) 10 Joules/kg
- c) 10 Joules/lb
- d) You never defibrillate a child

10) What is the initial defibrillation dose for an 8-year-old child?

- a) 300 Joules
- b) 200 Joules
- c) 5 Joules/kg
- d) 2-4 Joules/kg