

DIAGNOSTICS

CHEST RADIOGRAPH

Radiolucency, Flattened diaphragms, Increased intercostal spaces

Increased opacity, air bronchograms

Diffuse bilateral infiltrates, Ground glass

Batwing or butterfly shape, Fluffy infiltrates, Kerley B lines

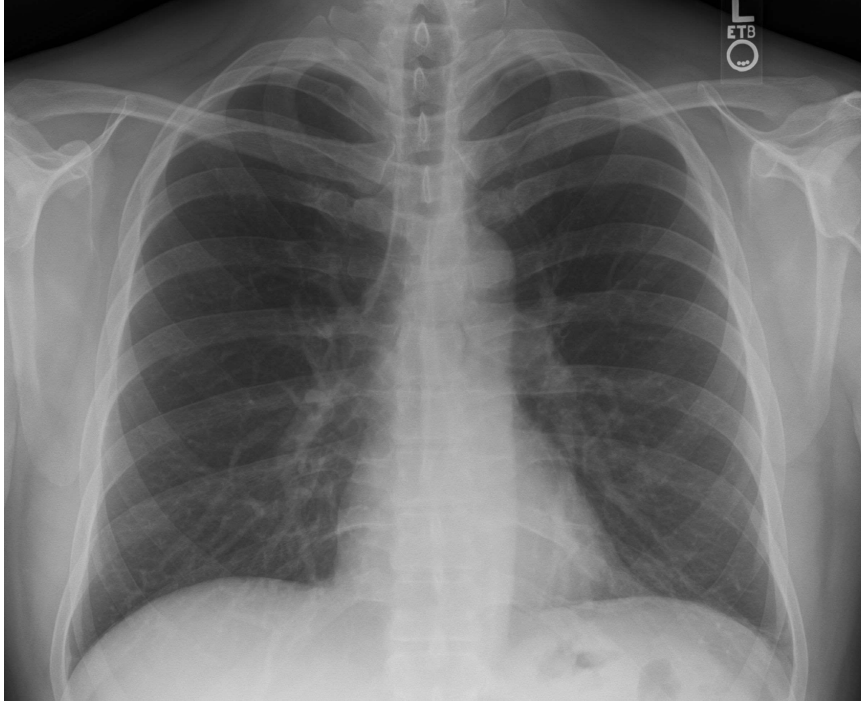
Honeycombing

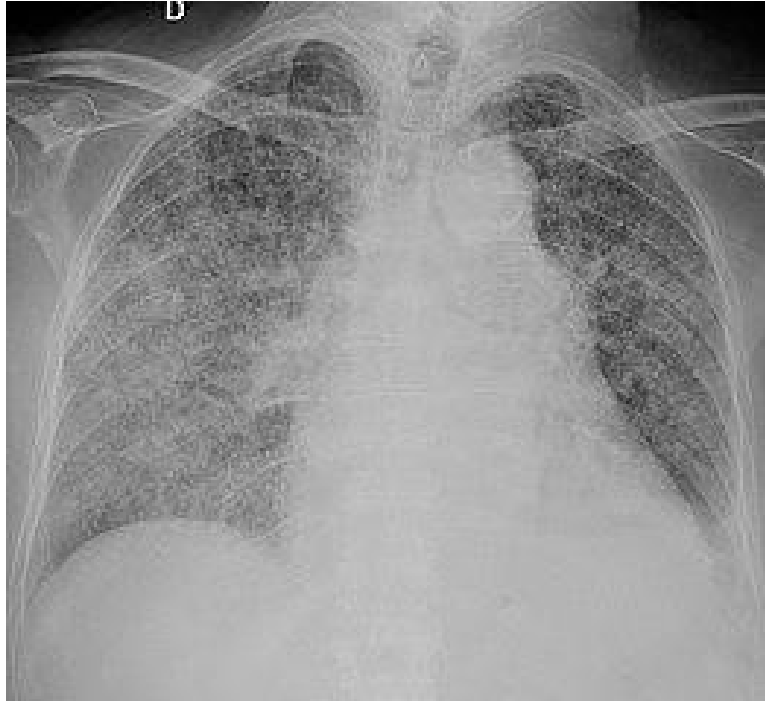
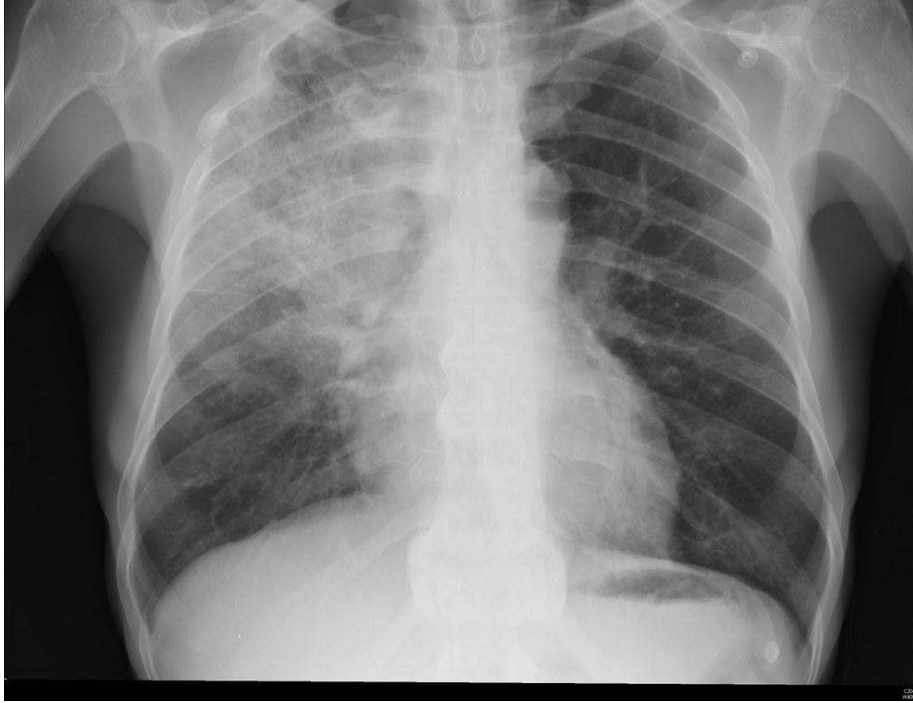
Air-fluid filled cavity

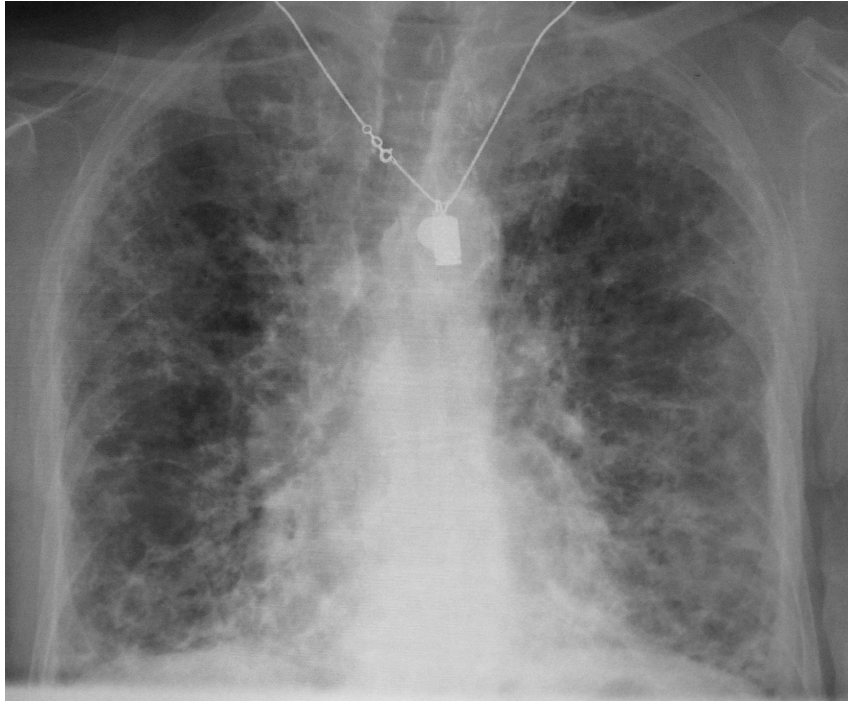
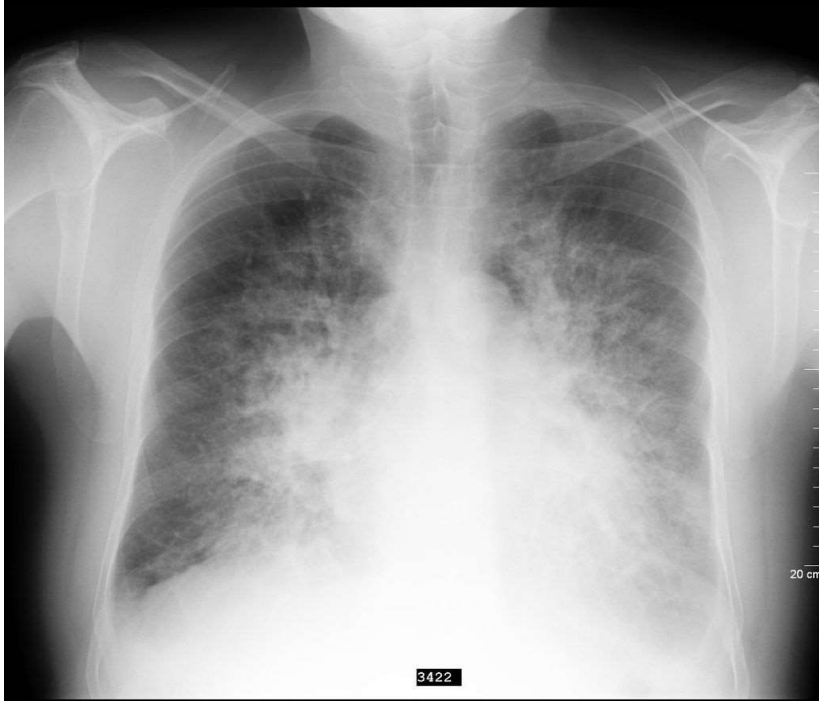
Wedge shaped atelectasis

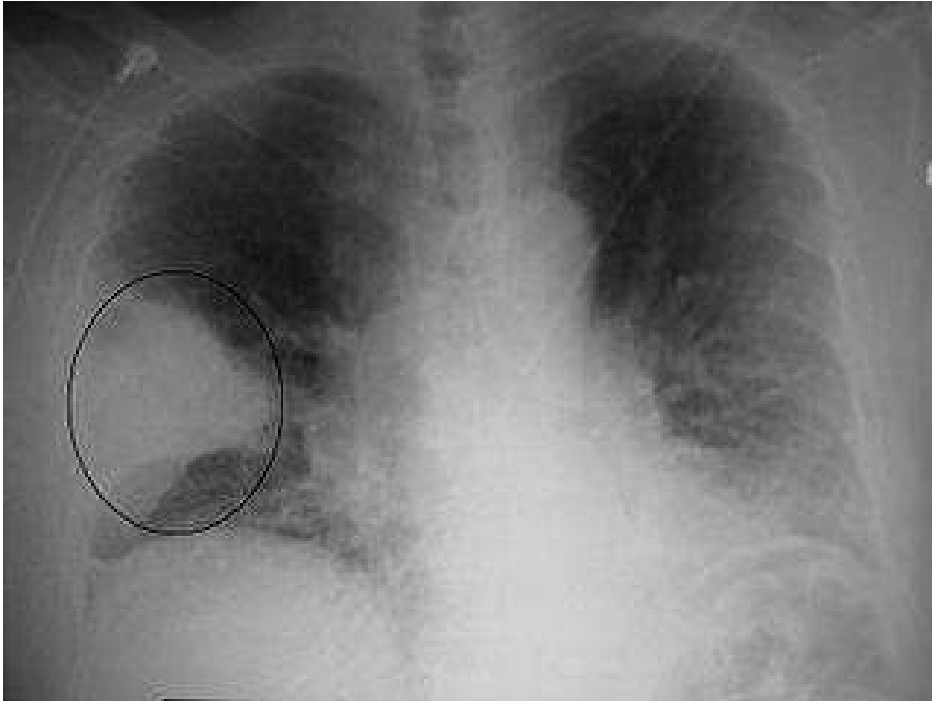
Absent lung markings with tracheal shift

Blunted costophrenic angle

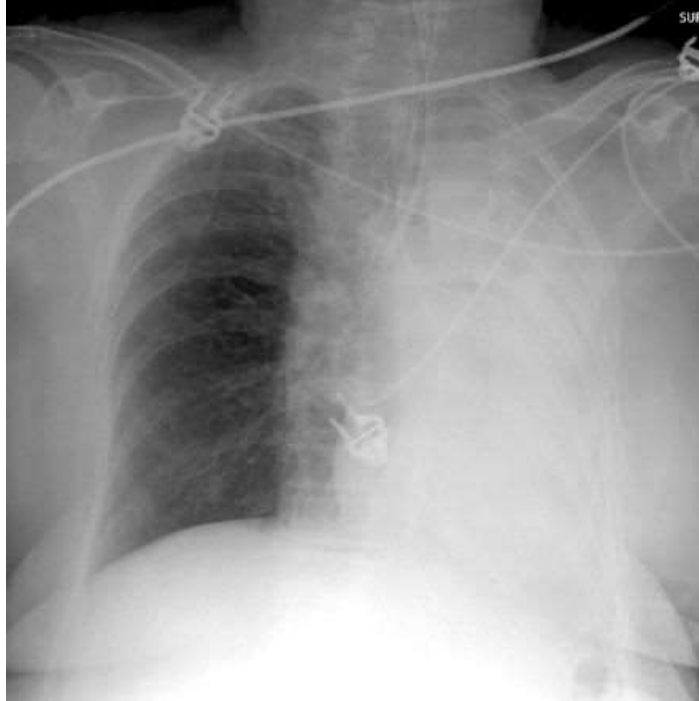












DIAGNOSTICS

KEY LAB VALUES

CBC

WBC

BUN, CR

BNP

TROPONIN

d-DIMER

INR

I & O

DIAGNOSTICS

Arterial Blood Gases

Know interpretations

Differentiate between Ventilation vs. Oxygenation

pH	7.36	7.26	7.19
PaCO₂	43	56	67
PaO₂	53	83	48
HCO₃⁻	24	24	24

Recognize CVF, AVF/CVF, AAH/CVF

pH	7.26	7.36	7.49
PaCO₂	71	56	43
PaO₂	60	60	48
HCO₃⁻	29	29	29

AAH/CVF vs. Partially Comp Met Alkalosis

pH	7.6	7.53	7.06
PaCO ₂	64	52	22
PaO ₂	82	48	139
HCO ₃ ⁻	36	36	9

Most likely Metabolic disturbance on the exam.

